

sensors

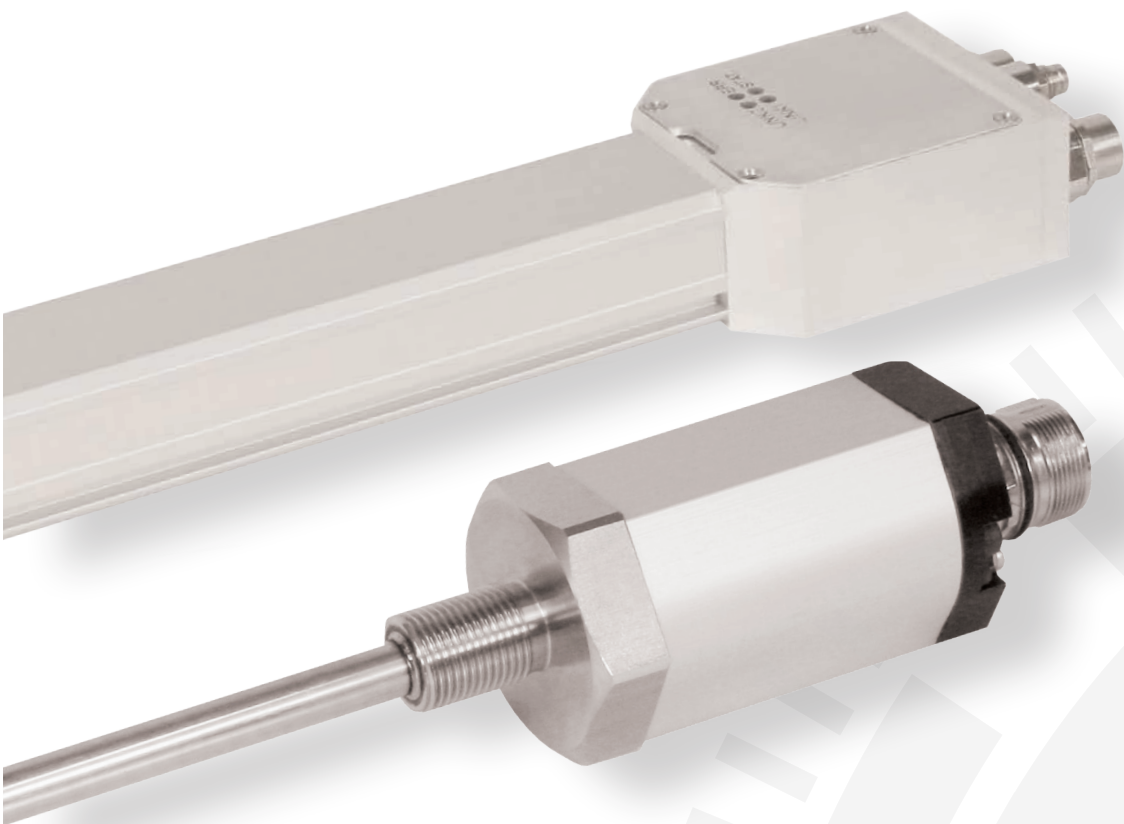
rotary  
linear

motion

systems

controls

# TR-Electronic Overview linear encoder



[www.tr-electronic.de](http://www.tr-electronic.de)



## TR-Electronic - Your Partner in Automation

For more than 25 years TR-Electronic has been a very successful company. We have over 300 employees with global reach. Our recipe for success: a lot of innovation and flexibility in everything we do. With our automation and communication capabilities we deliver quality products for the automation industry.

TR-Electronic GmbH is a constant within the sensor industry – more precisely in the development and production of digital angular and distance measurement systems for automation: from absolute and incremental rotary encoder, magnetostrictive transducers and laser distance measurement systems, electrical compact drives and servo controllers.

We offer products that are individually designed to meet your needs. As a response to new technology developments, we created the TRsystems product range, in order to provide you with complete solutions.

To us in Germany, as well as to our representatives abroad, it is very important to be innovative, precise and flexibel. We respond quickly, to meet your requirements.



- \_rotary encoder
- \_linear encoder
- \_laser
- \_compact drive



- \_development / services
- \_industrial PC
- \_fieldbus I/O



- \_sensors for stamping and metal forming machines
- \_control system



### Closely connected to our region

It is important to us that we develop and produce according to RoHS guidelines our products in Germany. We are proud to be one of our regions biggest employer. It is all of a piece by having everything in Trossingen. We can combine all our advantages starting with the development over the production and quality control up to the presentation and delivery.

Another success factor of our company are our superb trained employees. Our employees account for the quality and the success of our products. We create a comfortable and excellent working atmosphere, in which our employees can self-actualize and be a part of it. Being on their own responsibility and creative is very important to us. We support this with an ideal work environment for example by providing ergonomic work stations.

### Educational programm

In order to have a successful future, we put a lot of effort into the education of our young employees. We give high school students in our region the opportunity of a practical training to explore the different departments in our company. Our trainees also have a good chance of being taken over.

Our commitment to colleges and universities is comparable. As of now, we offer talented and ambitious students the opportunity to write their thesis with us. Additionally, we participate in establishing a semi privately sponsored college in Tuttlingen. This is a new thought out model where we engage with teachers, presentations, excursions, working material and work labs in rooms of our company.

## Content

### Linear encoder for special applications

- LMR 48 - positioning sensor to install into a hydraulic cylinder 10
- LE 200 - up to 240 m contact-free measurement 10
- LMC 55 - cascadable up to 20 m, delivered in handy pieces 11
- LA 50 LA 80 - level measurement in chemical aggressive mediums 11

### General

- Product overview TR-Electronic - Your Partner in Automation 4
- Applications sector-specific solutions 6
- Notes space for ideas 16
- Accessories electrical and mechanical accessories 21
- Distribution addresses Germany / International 22

### How to find the right linear encoder

Choose according to your requirements:

#### ① Linear absolute distance measurement system LA

For measurement length up to 4.000 mm. When the positioning sensor is mechanically moved when turned off, the actual position is shown after turning on the supply voltage. The LA system works contactless and wear-free. The linear absolute positioning sensors are perfect to build into a hydraulic cylinder. The measurement rod achieves a compression strength up to 600 bar (TÜV proven).

Specialties	stainless steel rod, for assembling directly into the hydraulic cylinder
Measurement range	up to 4 m
Resolution	●●●○○

#### ② Linear absolute dist. measurement system in a profile housing LP

The difference to the LA positioning system is the version with the profile housing. The measured length is protected in an extruded section out of aluminum. The position sensor is also available with a measuring slide for easy mounting. The distance of the position sensor to the profile housing will be adjusted through the measuring slide, only the actuator is mounted on the measuring slide.

Specialties	aluminum profile, multiple magnet function
Measurement range	up to 20 m
Resolution	●●●○○

## Products

Linear absolute distance measurement sensors	12
Stainless steel tube housing	13
Plastic housing	14
Aluminum profile housing	
High resolution absolute positioning sensor	16
Laser distance measurement system	18

#### ③ High resolution absolute positioning sensors glass measuring LT

The LT measuring system works with a photo electronic scanning. The smallest possible measurement step is 0,1 µm. Therefore, it is ideally qualified for applications demanding high resolution and accuracy.

Specialties	aluminum profile high resolution
Measurement range	up to 3 m
Resolution	●●●●●

#### ④ Laser distance measurement system LE

Our laser distance measurement devices are optical sensors, which are able to capture longer distances contact-free and controller capable. The individual components of the measuring system are light source, receiving optic, electronic evaluation and data interface as well as reflector.

Specialties	controller capable, closed loop control contact-free
Measurement range	0,2 up to 240 m
Resolution	0,1 mm

#### ⑤ Barcode measurement system

The BE90 is a measuring system reading the measured length with a barcode. This is how you can capture an absolute position when having non-linear movements and curvy systems.

Specialties	also for non-linear movements and winding systems
Measurement range	up to 10 km
Resolution	1 mm

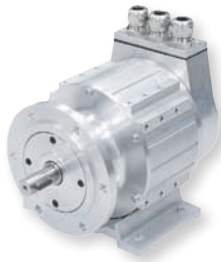
### Interfaces (others on request)

- SSI
- ISI
- Parallel
- SIN/COS
- LWL



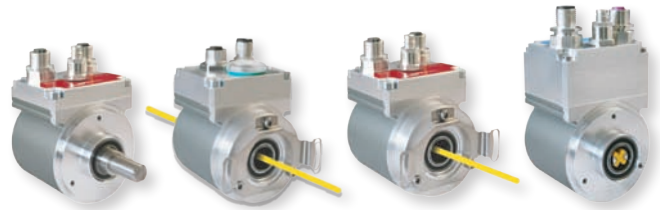
## TR-Electronic - Your Partner in Automation

General / Definition

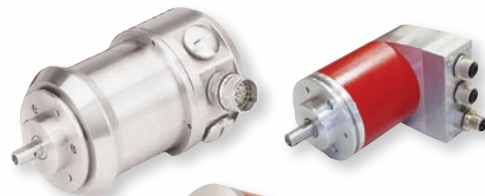


### Programmable rotary encoder

The standard of automation technology, available with all current fieldbus systems: PROFIBUS, Interbus, CANopen, DeviceNet and Industrial Ethernet. Including TR-Electronic's variety of mechanics, interfaces and functions.



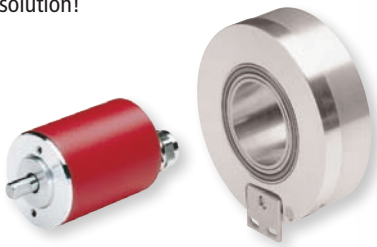
Linear Encoder



Laser

### Incremental rotary encoder

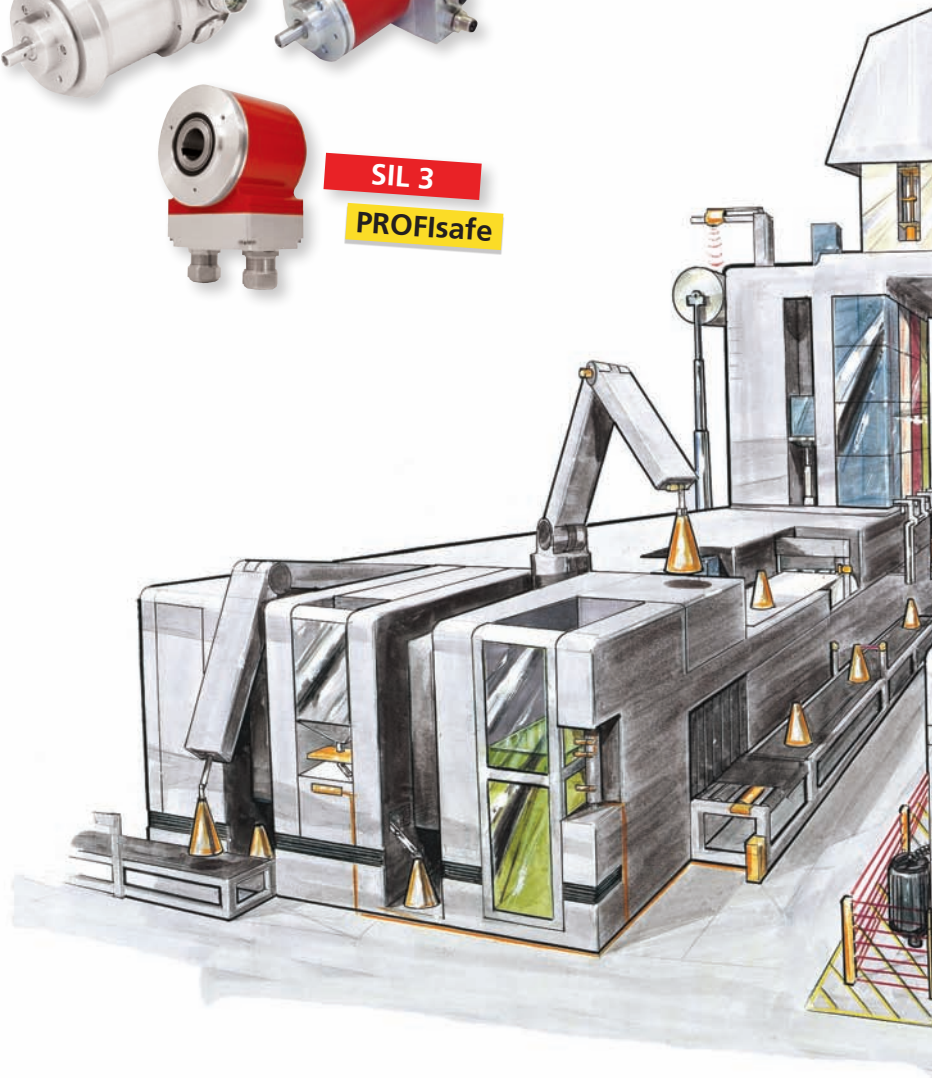
From 35 mm external diameter up to 55 mm hollow shaft - we always have a solution!



Accessories

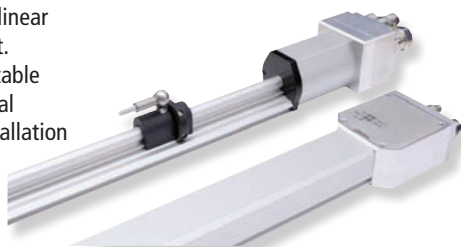
### Motor feedback systems

Feedback encoder for modern positioning drives. Optional integrated or directly mounted on the drive shaft via hollow shaft.



### Linear absolute displacement sensors

The compact class for linear absolute measurement. Directly bus-ready, suitable for harsh environmental conditions and for installation in hydraulic cylinders.



### Absolute high resolution linear measurement systems

Linear measurement with absolute sub-micron resolution without referencing.





**Intelligent positioning drive**

Absolute positioning directly via fieldbus.  
Integrated motor, power amplified position control-loop controller, absolute encoder, PLC functions and fieldbus interface.



**Heavy-duty industrial PC**

Double shock proof mounted housing isolates the electronics from vibration, while front access (MIPC) simplifies configuration and start up.  
Choose from our wide selection of housings.



**SPC - the PLC for PC**

Turns every PC into an efficient PLC under S5/S7 or IEC 1131 protocols. Combines the comfort of PC control with the safety of a separate processor for PLC tasks.



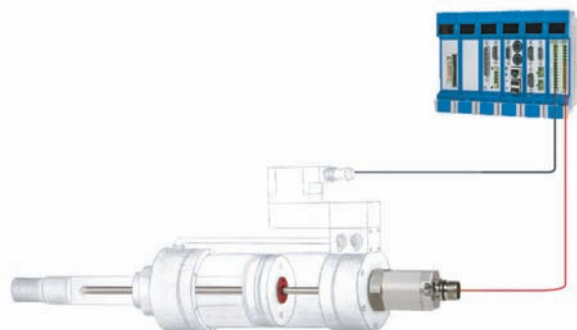
**@ctivelO - more than fieldbus modules**

Modular, rugged fieldbus node system I/O-node, small-scale PLC, decentralized axis controller, high performance cam controller, DIN-rail mounted industrial PC, servo controller for the hydraulic ... with commercial fieldbus systems, such as Profibus-DP, CANopen, DeviceNet, LightBus ... and ETHERNET as option!



**Laser distance measuring systems**

Absolute and wear-free measurement of distances up to 200 m via SSI, fieldbus and Ethernet.



General / Definition

Linear Encoder

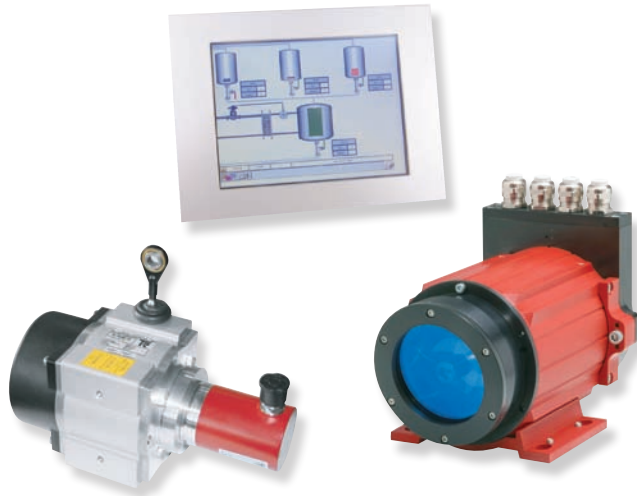
Laser

Accessories

## TR-Electronic - For Each Sector the Perfect Solution

### Storage and logistics

It is especially important for storage equipment such as rack feeders, transfer units and cranes to have an effective, decentralized measurement and control technology for easy project planning and fast start up.



### Packaging industry

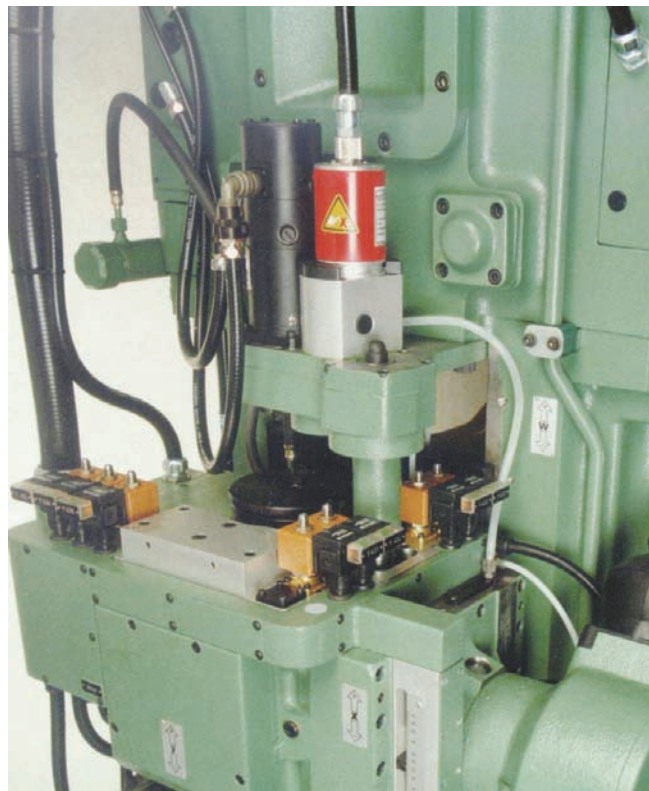
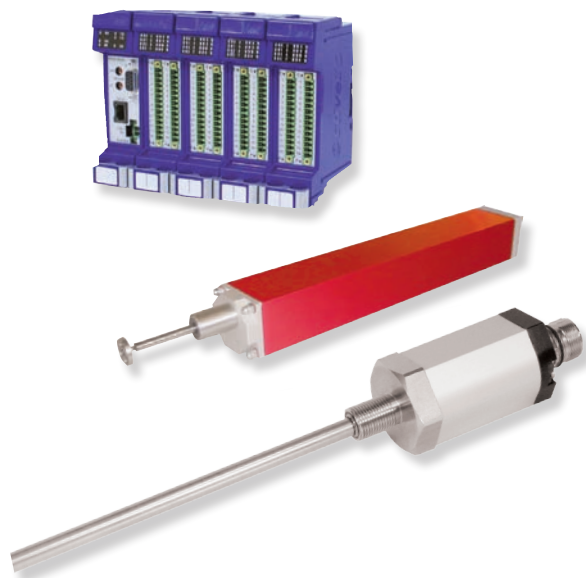
Flexible automation solutions according to our customers' wishes are the intelligent base for a successful machine concept within the packaging industry. High processing speed, enables fast cycle times and larger lot sizes. Absolute measurement systems save time consuming Homing Sequences. Highly integrated, intelligent sensors also allow for distributed control. When it comes to needing higher precision, we have a perfect solution.





## Metal working

For years the world of presses and stamping has been a specialty of TR-Electronic. We design and develop products from the beginning, in such a way that they resist high shock and vibration impacts.



## Wood-working

Intelligent, decentralized and efficient sensors with on-board processing and components that work, despite high temperature fluctuations, are the base for automation solutions within the wood-working industry. Our specialty is to equip and network transfer machines, machine centers and installation fields, especially if you have particular requirements for your machine.



General / Definition

Linear Encoder

Laser

Accessories

## TR-Electronic - For Each Sector the Perfect Solution

### Print technology and paper conversion

Fast signal processing for printing machines enables higher accuracy and decentralized compact drives automate adjusting procedures. With stainless steel housings, rotary encoders even sustain aggressive mediums like groundwood pulp in paper machines. Small absolute rotary encoders measure movements in tight spaces.



### Event technology

Our rotary encoders offer safety in all required classes for stage technology and other SAFE applications. From rotary encoders with additional incremental tracks up to SIL 3 certified safety rotary encoders, we offer the right solution for safety.

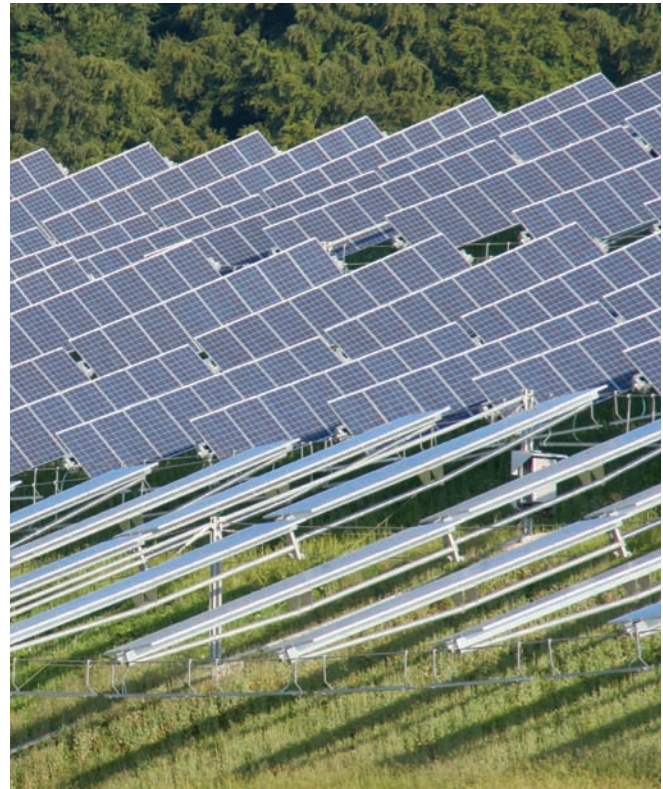
#### SAFETY INSIDE





## Renewable energy

With intelligent tracking of photovoltaic constructions the efficiency is improved and the automation accelerated. High resolution rotary encoders enable exact positioning. Compact drives reduce the number of connected components and provide years of orientation of your construction towards the sun.



## Plastics processing

Various measurement tasks within plastic processing machines require fast signal processing and high precision. Linear measurement systems, for implementing into hydraulic cylinders, blend smoothly into injection molding machines. Industrial PCs are an universal platform for user specific control systems for series production and special machines.



General / Definition

Linear Encoder

Laser

Accessories

## Linear Measurement Systems for Special Applications

### LMR48 - positioning sensor to install into the hydraulic cylinder

Contact-free. Precise. Reliable.

The new linear absolute positioning system measures contact-free and therefore wear-free. The established magnetostrictive measuring method provides for a precise and reliable positioning response and securely resolves up to 0,05mm. The flat, compact design of the sensor makes the complete integration into the hydraulic sensor easier. On one hand the sensor is optimal protected and on the other the total length of the hydraulic drive is reduced. This is a big advantage especially when having less mounting space or docking cylinder onto a ball joint. The positioning system LMR 48 is available with a measuring length up to 2m. The controller communicates with the sensor over analog signal or CANopen.

- + contact-free and wear-free
- + precise and reliable positioning response
- + the sensor is completely integrated into the hydraulic cylinder and therefore optimal protected
- + mounting the cylinder with ball joints is possible

Measurement length	up to 2 m
Resolution	0,01 mm
Interfaces	Analog and CANopen

Further information you will find on page 13

for implementing into hydraulic cylinders



### LE 200 - up to 240m contact-free measurement

Absolute. Contact-free. Controller suitable.

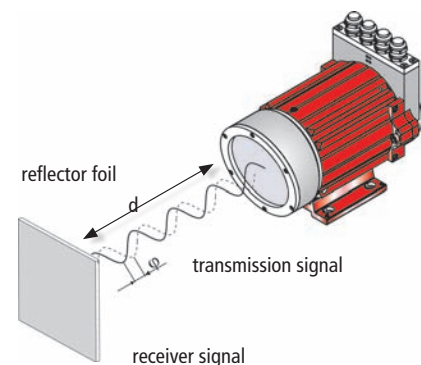
The series of the laser distance measuring devices are optical sensors. You can capture longer distances contact-free and controller suitable. The components of the laser positioning system are the laser light source, light collector, electronic evaluation and data interfaces such as a reflector. The device sends out a modulated light beam which is reflected by the reflector. Out of the phase difference between the send and received light beam, the distance is calculated 1000 times per second and issued with an adjustable resolution of up to 0,1 mm (physical resolution 0,8 mm).

- + capturing of linear movements
- + particularly suitable for storage and logistics
- + programmable
- + optional with preliminary setup for connecting a cooling circuit
- + stability of the measurement through its intensity / temperature control
- + robust design

Measurement length	0,2 m up to 240 m
Resolution	0,1 mm
Interface	PROFIBUS+SSI, CANopen, DeviceNet, Interbus-S, EtherNet/IP, SSI (others on request)

Further information you will find on page 18

contact-free up to 240 m





## LMC55 - cascadable up to 20m, delivered in handy pieces

Mounting is very easy.

By adding profile houses of positioning sensors, you can achieve arbitrary measurement lengths. To achieve a continuous measurability of the measurement length, the individual systems have to overlap. After adding the housing parts together they are form-fit. The density of IP 65 is given for the entire measurement system when parts are mounted correctly.

- + handy sizes of the individual systems
- + individual elements can almost be installed in an arbitrary order
  - the internal addressing happens automatically
- + contact-free, magnetostrictive method - no wear or tear!
- + surface even installation possible

Possible applications:

- \_cutter adjustment in a roller cutter machine
- \_wear-free vertical axis in a high rack warehouse
- \_transfer vehicles and stage technology (stage wagon)

Measurement length	up to 20 m
Resolution	0,05 mm
Interface	PROFIBUS DP (other interfaces on request)

Further information you will find on page 15



## LA50 LA80 - level measurement in chemical aggressive mediums

Both linear absolute positioning sensors (LA50 and LA80) are suitable for the level measurement in aggressive mediums. To achieve a high resistance against the mediums, the measurement systems and the electronic are put into a tube with a flange out of polypropylene.

- + suitable for the use in aggressive mediums
- + for the galvanic and the food production
- + plastic housing
- + capturing of linear movements
- + contact-free, wear-free scanning
- + capable of parametrization
- + adjustment over input

Measurement length	0,1 up to 4 m
Resolution	up to 0,005 mm (LA 50)
Interfaces	SSI, Analog

Further information you will find on page 13

Example for substances (others possible):






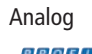






- \_calcium chloride, watery (in each concentration)
- \_calcium phosphate
- \_calcium sulfate
- \_quinine
- \_chloride, gaseous dry and moist
- \_chloroform (technical pure)
- \_chromic acid, watery (concentration 50%)
- \_citrus juices
- \_cola concentrate



- \_sulfur dioxide, dry and moist (in each concentration)
- \_sulfur acid, watery (concentration up to 50 %, 98 %)
- \_sea water
- \_soap solution, watery (in each concentration)
- \_mustard
- \_silver nitrate
- \_silicon oil
- \_liquor
- \_sulfate, watery solution (each concentration)
- \_turpentine oil (technical pure)



## Linear Absolute Positioning Sensor in a Stainless Steel Housing

	LA 46	LA 46 H	LA 66
Specifics and specifications	Distance measurement, contact-free and wear-free, for installing into a hydraulic cylinder	With replacable distance sensor, to set parameters, positioning value adjustment	For installing into a hydraulic cylinder, cam controller up to eight cams
Product picture			
Version	Stainless steel tube	Stainless steel tube	Stainless steel tube
Measurement length	50 ... 4.000 mm	50 ... 4.000 mm	100 ... 4.000 mm
Resolution (max.) Analog Interface	0,005 mm 12/16 bit	0,005 mm 12/16 bit	0,01 mm 12/16 bit
Accuracy (typically)	± 0,15 mm	± 0,15 mm	± 0,05% measured length
Hysteresis (max.)	± 0,02 mm	± 0,02 mm	± 0,1 mm
Interfaces (others on request)	SSI Analog   CANopen	SSI Analog   CANopen	Parallel Analog NSW LWL FIPIO  
Supply voltage	24 VDC, - 20 %, +10 %	24 VDC, - 20 %, +10 %	24 VDC, - 20 %, +10 %
Connection technology Cable connection Connector	 axial	 axial	 axial, radial
Temperature range	0 ... +70 °C	0 ... +70 °C	0 ... +70 °C
Protection class	IP 65	IP 65	IP 65
Programmability	TRWinProg, PT100 bus	TRWinProg, PT100 bus	TRWinProg, PT100 bus
Further options and accessories	Seperate outer tube for easy sensor switch, for the direct mounting into the hydraulic cylinder	Optional work temperature: -20 °C ... +70 °C, multiple magnet function, up to 30 magnets, further interfaces deliverable	Multiple magnet function up to 12 magnets, further interfaces deliverable

### Notes

---

---

---

---

---

---

---

---

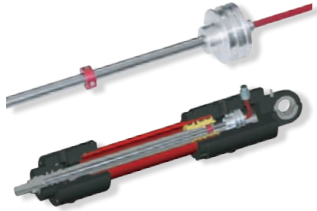


---

---

---

---

## Linear Absolute Positioning Sensor in a Plastic Housing

	LMR 48	LA 50	LA 80
Specifics and specifications	For complete installation into a hydraulic cylinder (also with ball joint), short total length	For using in aggressiv mediums or the area of galvanic	For using in aggressiv mediums with float
Product picture			
Version	Compact, flat design	Plastic tube	Plastic tube
Measurement length	up to 2.000 mm	100 ... 1.000 mm	100 ... 4.000 mm
Resolution (max.) Analog Interface	0,01 mm 12 bit	0,005 mm 12/16 bit	0,05 mm 16 bit
Accuracy (typically)	± 0,05 % measured lenght	± 0,15 mm	± 0,05 % measured lenght
Hysteresis (max.)	± 0,2 mm	± 0,02 mm	± 0,05 mm
Interfaces	Analog <b>CAN</b> <sub>open</sub> (further interfaces on request)	SSI Analog	SSI Analog
Supply voltage	12 VDC, - 5 %, +10 %	24 VDC, - 10 %, +10 %	24 VDC, - 20 %, +10 %
Connection technology Cable connection Connector	✓ axial	✓ on the cable	✓ on the cable
Temperature range	-40 ... +85 °C	0 ... +70 °C	0 ... +70 °C
Protection class	IP 65	IP 68	IP 68
Programmability	TRWinProg, bus	TRWinProg, PT100	TRWinProg, PT100
Further options and accessories	Over 2.000 mm on request	Thread M18 x 1.5 further interfaces deliverable, optional PROFIBUS with external box	Thread DIN 259 - RS2

### Notes

---

---

---

---

---

---

---

---

---

---

General / Definition

Linear Encoder

Laser

Accessories

## Linear Absolute Positioning Sensor in a Aluminum Profile Housing

	LP 46	LMP 30	LMP 30 BUS
<b>Specifics and specifications</b>	Distance measurement for engineering with a guided magnet	Distance measurement in a flat profile housing	Distance measurement in a flat profile housing
<b>Product picture</b>			
<b>Version</b>	aluminum strand casting profile	aluminum strand casting profile	aluminum strand casting profile
<b>Measurement length</b>	50 ... 4.000 mm	50 ... 4.000 mm	50 ... 4.000 mm
<b>Resolution (max.) Analog Interface</b>	0,005 mm 12/16 bit	0,05 mm 12 bit	0,005 mm
<b>Accuracy (typically)</b>	± 0,15 mm	± 0,2 mm	± 0,1 mm *
<b>Hysteresis (max.)</b>	± 0,02 mm	± 0,02 mm	± 0,02 mm
<b>Interfaces</b>	SSI Analog    EtherCAT <sup>®</sup>  POWERLINK <sup>®</sup>   EtherNet/IP <sup>®</sup> 	SSI Analog Start-Stop	  EtherCAT <sup>®</sup>  POWERLINK <sup>®</sup>   EtherNet/IP <sup>®</sup> 
<b>Supply voltage</b>	24 VDC, - 20 %, +10 %	24 VDC, - 20 %, +10 %	24 VDC, - 20 %, +10 %
<b>Connection technology</b> Cable connection Connector	 axial	 on the cable	- axial
<b>Temperature range</b>	0 ... +70 °C	0 ... +70 °C	0 ... +70 °C
<b>Protection class</b>	IP 65	IP 65	IP 65
<b>Programmability</b>	TRWinProg bus	-	bus
<b>Further options and accessories</b>	Multiple magnet function up to 3 magnets: 0,005 mm resolution up to 30 magnets: 0,05 mm resolution	-	Multiple magnet function up to 3 magnets: 0,005 mm resolution up to 30 magnets: 0,05 mm resolution * up to 1.000 mm

### Notes

---

---

---

---

---

---

---

---

---

---

---

---

---

---

General / Definition

Linear Encoder

Laser

Accessories





### High Resolution Absolute Positioning Sensors

	<b>LT-S</b>	<b>LT-G</b>	<b>LT-PI</b>
Specifics and specifications	Distance measurement, high resolution	Distance measurement, high resolution, compact, space saving housing	Distance measurement, high resolution, usable in a running production
Product picture			
Version	measuring slide	compact	decoupled measurement axis
Measurement length	140 ... 3.040 mm	60 mm	100, 150, 200, 250 mm
Resolution (max.)	0,1 µm	0,1 µm	0,1 µm
Accuracy (typically)	± 5 µm	± 5 µm	± 5 µm
Interfaces	SSI, incremental 5V/24V, SIN/COS	SSI, incremental 5V/24V, SIN/COS	SSI, incremental 5V/24V, SIN/COS
Supply voltage	8 ... 27 VDC	8 ... 27 VDC	8 ... 27 VDC
Connection technology Cable connection Connector	✔ on the cable	✔ on the cable	✔ on the cable
Temperature range	0 ... +65 °C	0 ... +65 °C	0 ... +65 °C
Protection class	IP 50	IP 54	IP 66
Programmability	TRWinProg	TRWinProg	TRWinProg
Further options and accessories	Analog,  , <b>CANopen</b> and  over interface adapter, also with multiple sensing heads within the same system	Analog,  , <b>CANopen</b> and  over interface adapter	Analog,  , <b>CANopen</b> and  over interface adapter  Return spring

### Notes

---

---

---

---

---

---

---

---

---

---

---

---

---

---

---

---

---

---

---

---

---

---






---

General / Definition

Linear Encoder

Laser

Accessories

	<b>LT - RV</b>
Specifics and specifications	Distance measurement, high resolution For the use in heavy industry
Product picture	
Version	protection housing
Measurement length	400, 520 mm
Resolution (max.)	0,1 µm
Accuracy (typically)	± 5 µm
Interfaces	SSI, incremental 5V/24V, SIN/COS
Supply voltage	8 ... 27 VDC
Connection technology Cable connection Connector	 on the cable
Temperature range	0 ... +65 °C
Protection class	IP 66
Programmability	TRWinProg
Further options and accessories	Analog,  ,  and  over interface adapter  Return spring

---

---

---

---

---

---

---

---

---

---

---

---

---

---

---

---

---

---

---

---

---

---

---

---

---

---

Notes

---

---

---

---

---

---

---

---

---

---

---

---

---

---

---

---

---

---

---

---

---

---

---

---

---

---



**Laser Distance Measurement System**

General / Definition

Linear Encoder

Laser

Accessories

	LE 200	LLB 60 D	BE 90
Specifics and specifications	Distance measurement	Distance measurement RS232 and RS422	Distance measurement
Product picture			
Version	reflector	without reflector	barcode
Measurement length	0,2 ... 240 m	0,05 ... 65 m (without reflector) 0,05 ... 500 m (with reflector)	up to 10.000 m
Resolution (max.)	0,1 mm	0,1 mm	1 mm
Accuracy (typically)	± 2 mm	± 1,5 mm	± 1 mm
Cycle time	0,001 s	0,15 - 4 s	0,002 s
Interfaces	SSI  EtherCAT <sup>®</sup>  DeviceNet  POWERLINK  CANopen  INTERBUS  EtherNet/IP <sup>®</sup> 	Analog 	SSI 
Supply voltage	18 ... 27 VDC	9 ... 30 VDC	10 ... 30 VDC
Connection technology	radial / axial	axial 	-
Cable connection	radial / axial	axial	radial
Connector			
Temperature range	-30 ... +50 °C	-10 ... +50 °C	0 ... +40 °C
Protection class	IP 65, laser safety class 2	IP 65, laser safety class 2	IP 65
Programmability	TRWinProg bus	over PC	BE-Config bus
Further options and accessories	Heating for the inside of the housing and front window Cooling	Heating for the inside of the housing and front window	Heating

**Notes**

---

---

---

---

---

---

---

---

---

---

---

---

---

---

---

---

---







## Electrical and Mechanical Accessories

### Programming adapter

Connects the device to the PC. Changes signals from USB to encoder programming interface and is electrically isolated. We suggest the use in conjunction with one of our switch cabinet modules. USB to encoder conversion on request.



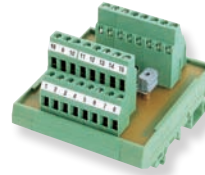
### SSI-Parallel converter PU10

Converts absolute position and CAM signals from SSI interface to parallel output bits with max. 32 bit.



### Switch cabinet module

The perfect aid for transparent rotary encoder cabling. Correct grounding of signal wires and easy connection to our programming adapter.



### For linear absolute measurement systems

Double clamping for linear absolute measuring systems in profile housings (magnetostriction: LP) and magnets for linear absolute position measuring system (magnetostriction: LA, LP).



### Optical data transfer ID 200

- + optical data transfer
- + range 120 m, 200 m
- + PROFIBUS / RS 485
- + Interbus-S 500 kBit/s / RS 422
- + Interbus-S 2 MBit/s / LWL

Range	0,2 ... 200 m
Sendediode	infrared light, wave length 880 m
Protection class	IP 65
Housing	aluminum die casting light entry / exit glass
Work temperature	-30 °C ... +70 °C
Weight	ca. 1200 g
Supply voltage	18 ... 30 VDC
Opening angle	± 0,5° to optical axis



### Universal display TA-Mini

Is displaying actual values of the SSI measuring system (TR-Electronic and other producers).



Existing SSI connections between measuring system and the controller can be monitored and the position can be shown without influencing the connection.

- + comfortable display function
- + scale
- + zero shift
- + decimal, hexadecimal, binary
- + leading zero, prefix...

Is displaying actual values and other parameters of rotary encoder (rotary encoder of TR-Electronic with arbitrary process and programming interfaces). The process interface remains free.

#### \_Programming module

The display itself can be programmed via USB or PC (TRWinProg).

Over the display the measuring system can be programmed (those that are connected to the programming interface). The TA-Mini takes over the function of the PC adapter.

#### \_Signal converter

Parameters read in over the programming interface can be displayed as SSI value.

Therefore, you easily can retrofit, for example, a LLB60 Analog with a SSI interface or via programming interface readout speed ... that can be send via SSI.

#### \_Linked displays

Values shown can be transmitted to other TA-Minis (display at a machine, master display). The scale can be taken over or independently adjusted.

#### \_Displaying differences

For each display can be chosen, when having two linked displays with their own SSI measuring system, if one would like to show its own position or the one of the other measuring system or the difference of it.

## Germany

**TR-Electronic GmbH**  
 Eglisshalde 6  
 D-78647 Trossingen  
 Tel.: +49 (0)7425 228-0  
 Fax: +49 (0)7425 228-33  
 info@tr-electronic.de  
 www.tr-electronic.de

**Engineering Office West**  
 Albecke 6  
 D-58638 Iserlohn  
 Tel.: +49 (0)2371 159 56-0  
 Fax: +49 (0)2371 159 56-29  
 info@tr-electronic.de

Ralf Gehrke  
 Tel.: +49 (0)2371 159 56-12  
 Ralf.Gehrke@tr-gruppe.de

Guido Siebert  
 Tel.: +49 (0)2371 159 56-11  
 Guido.Siebert@tr-gruppe.de

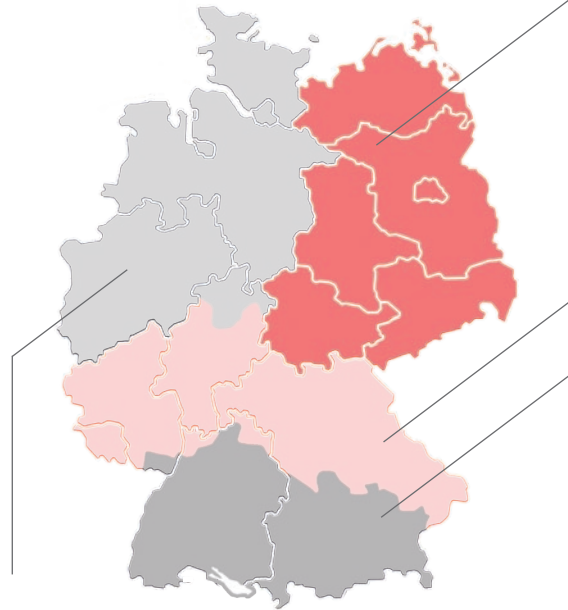
**Engineering Office East**  
 Schäferestraße 15  
 D-07973 Greiz  
 Dr. Dietrich Thoß  
 Tel.: +49 (0)3661 67 11 04  
 Fax: +49 (0)3661 67 11 05  
 Dietrich.Thoss@tr-gruppe.de

**Engineering Office South  
 Office Frankfurt**  
 Roland Meyer  
 Tel.: +49 (0)6192 39 061  
 Roland.Meyer@tr-gruppe.de

Matthias Pickelmann  
 Tel.: +49 (0)9191 61 55 929  
 Matthias.Pickelmann@tr-gruppe.de

**Office Stuttgart**  
 Heiko Flentje  
 Tel.: +49 (0)7454 8012  
 Heiko.Flentje@tr-gruppe.de

Kay Vogt  
 Tel.: +49 (0)7805 91 65 684  
 Kay.Vogt@tr-gruppe.de



## International

**Argentina**  
 AEA Aparatos Eléctricos Automáticos  
 S.A.C.I.E./ Asunción 2130  
 AR-1419 Buenos Aires  
 Tel.: +54 / 11-4574 1155  
 Fax: +54 / 11-4574 2400  
 servicioalcliente@aea.com.ar

**Australia**  
 Sensor Measurement Pty Ltd.  
 Unit 8/ 26 Shields Crescent  
 P.O. Box 1079  
 AU-Booragoon  
 Western Australia 6154  
 Tel.: +61 / 8-93 17 25 52  
 Fax: +61 / 8-93 17 24 52  
 sales@sensormeasurement.com.au

**Belgium**  
 Martek SPRL - BVBA  
 Rue du Broux 16  
 B-1320 Beauvechain  
 Tel.: +32 / 10 86 82 80  
 Fax: +32 / 10 86 82 89  
 info@martek.be  
 www.martek.be

**Brazil**  
 C+Tecnologia  
 Avenida Pedroso de Morais, 433 -13º andar  
 CEP-05419-000  
 BR-Pinheiros - São Paulo -SP

Tel.: +55 / 11-2168 6554  
 Fax: +55 / 11-2168 6555  
 info@ctecnologia.com.br  
 www.ctecnologia.com.br

**Canada**  
 TR Electronic  
 P.O. Box 2543, Station B  
 CDN-London, Ontario Canada N6A 4G9  
 Tel.: +1 / 519-452 1999  
 Fax: +1 / 519-452 1177  
 customercare@trelectronic.com  
 www.trelectronic.com

**China**  
 TR-Electronic GmbH Shanghai Rep. Office  
 Room 1002, Part-C, Orient International Plaza  
 No. 85 Lou Shan Guan Road,  
 Hongqiao Developing Zone  
 CN-200336 Shanghai, P.R. China  
 Tel.: +86 / 21 - 6278 7611  
 Fax: +86 / 21 - 6278 7629  
 tr-electronic@online.sh.cn

**Denmark**  
 TR-Electronic Danmark ApS  
 Hustedgårdvej 22  
 DK-8722 Hedensted  
 Tel.: +45 / 75 89 06 03  
 Fax: +45 / 75 89 06 36  
 cbj@tr-electronic.dk  
 www.tr-electronic.dk

**Finland**  
 Sarlin Oy. E. AB  
 Kaivokselantie 3-5  
 SF-00101 Helsinki 10  
 Tel.: +358 / 9-504 441  
 Fax: +358 / 9-563 3227  
 myynti.automaatio@sarlin.com  
 www.sarlin.com

**France**  
 TR-Electronic France SARL  
 56 Boulevard du Courcerin Bât. 16  
 ZI. Pariest-Marne La Vallée  
 F-77183 Croissy-Beaubourg  
 Tel.: +33 / 1-64 62 13 13  
 Fax: +33 / 1-64 62 20 02  
 info@tr-electronic.fr  
 www.tr-electronic.fr

**Great Britain**  
 TR-Controls Ltd.  
 12a Oak Industrial Park  
 Great Dunmow  
 GB-Essex CM6 1XN  
 Tel.: +44 / 1 371-876 187  
 Fax: +44 / 1 371-876 287  
 alan@trcontrols.co.uk  
 www.trcontrols.co.uk

### India

Global-Tech (India) Pvt Ltd  
404 White House  
1482 Sadashiv Peth  
IND-Tilak Road, Pune - 411 030  
Tel.: +91 / 20- 2447 00 85  
Fax: +91 / 20- 2447 00 86  
info@globaltechindia.com

### Israel

DOR Drive Systems L.T.D.  
P.O.Box 6  
ISR-49910 Kibbutz Einat  
Tel.: +972 / 3 9007595  
Fax: +972 / 3 9007599  
sales@dor1.co.il  
www.dor1.co.il

### Italy

Telestar S.r.l.  
Via C. Colombo 13  
I-22069 Rovellasca (Co)  
Tel.: +39 / 02-96 74 02 68  
Fax: +39 / 02-96 74 02 73  
telestar@telestar-automation.it  
www.telestar-automation.it

### Japan

SANTEST CO. LTD.  
1-60 Tsuneyoshi, 1-Chome  
Konohanaku  
J-Osaka 554-8691  
Tel.: +81 / 6-6465 5561  
Fax: +81 / 6-6465 5921  
info@santest.co.jp

### Mexico

TR Electronic  
P.O. Box 2543, Station B  
CDN-London, Ontario Canada N6A 4G9  
Tel.: +1 / 519-452 1999  
Fax: +1 / 519-452 1177  
customercare@trelectronic.com  
www.trelectronic.com

### Netherland

TR-Electronic Nederland BV  
Postbus 1682  
NL-6201 BR Maastricht  
Tel.: +31 / 43 352 3614  
Fax: +31 / 43 352 3555  
info@tr-electronic.nl  
www.tr-electronic.nl

### Austria

TR-Electronic GmbH  
Tragösserstraße 117  
A-8600 Bruck/Mur  
Tel.: +43 / 38 62-5 50 06 0  
Fax: +43 / 38 62-5 50 06 33  
info@tr-electronic.at  
www.tr-electronic.at

### Poland

Stoltronic-Polska Sp. z o.o  
ul. Dabrowskiego 238C  
PL – 93-231 Lodz  
Tel.: +48 / 42-649 12 15  
Fax: +48 / 42-649 11 08  
stoltronic@stoltronic.pl  
www.stoltronic.pl

### Sweden

TR Electronic Sweden AB  
Enebybergsvägen 10B  
S-182 36 Danderyd  
Tel.: +46 / 8-756 72 20  
Fax: +46 / 8-756 76 80  
mailbox@trelectronic.se  
www.trelectronic.se

### Switzerland

TR-Electronic SA  
14, Ch. Pré-Fleuri  
CH-1228 Plan-les-Ouates/Genève  
Tel.: +41 / 22-7 94 21 50  
Fax: +41 / 22-7 94 21 71  
info@tr-electronic.ch  
www.tr-electronic.ch

### Singapore

Globaltec Electronics (Far East) Pte. Ltd.  
50 Bukit Batok Street 23  
#06-27 Midview Building  
SIN-659578 Singapore  
Tel.: +65 / 6267 9188  
Fax: +65 / 6267 8011  
globaltec@pacific.net.sg

### Slovenia

S.M.M. d.o.o.  
Jaskova 18  
SI-2001 Maribor  
Tel.: +386 / 2450 2300  
Fax: +386 / 2450 2302  
smm@siol.net  
www.smm.si

### Spain, Portugal

Intertronic Internacional, SL  
C/Johannes Gutenberg, 4 y 6  
P.I. Parque Tecnológico  
E-46980 Valencia  
Tel.: +34 / 96-375 8050  
Fax: +34 / 96-375 1022  
info@intertronic.es  
www.intertronic.es

### South Africa

Siemens VAI Metals Service (Pty) Ltd.  
Detek After Sales Service  
19 Tom Muller Road  
P.O. Box 793  
SA-Meyerton 1960  
Tel.: +27 / 16 3620300  
Fax: +27 / 16 3620725  
info@vainserv.co.za

### South Korea

MS Intech Co., Ltd.  
Gochon Bd. #226, Yeongdeungpo-dong 2ga  
94-121 Yeongdeungpo-gu  
COR-Seoul  
Tel.: +82 / 2-334 0577  
Fax: +82 / 2-862 1591  
sales@msintech.com

### Thailand

T+R Electronic (Thailand) Co., Ltd.  
354/14 M.12 Nongprue Banglamung  
TH-20260 Chonburi  
Tel.: +66 / 38 364 788  
Fax: +66 / 38 364 789  
trthailand@trelectronic.co.th  
www.trelectronic.co.th

### Czech Republic , Slovakia

DEL a.s.  
Strojirenská 38  
CZ-59101 Žďár nad Sázavou  
Tel.: +420 / 566 642 257  
Fax: +420 / 566 621 657  
del@del.cz

### Turkey

Üniversa İç-Dis Tic. ve Mak. San. Ltd. Sti.  
Cemal Gürsel Caddesi No: 11 D: 4  
35600 Karsiyaka-İZMİR / TÜRKİYE  
TR - 35110 Yenisehir, Izmir  
Tel.: +90 232 382 23 14  
Fax: +90 232 382 23 24  
E-Mail: info@universa.com.tr  
Homepage: www.universa.com.tr

### USA (TR-Electronic)

TR Electronic  
P.O. Box 4448  
US-Troy, MI 48099  
Tel.: +1 / 248-244-2280  
Fax: +1 / 248-244-2283  
customercare@trelectronic.com  
www.trelectronic.com

### USA (TRsystems)

TRS Fieldbus Systems, Inc.  
2619 Product Dr  
US-Rochester Hills, MI 48309  
Tel.: +1 / 586 826-9696  
Fax: +1 / 586 826-8899  
support@trs-fieldbus.com  
www.tr-s-fieldbus.com

### Eastern Europe, CIS

Stoltronic Handels GmbH  
Karl-Kurz Gasse 21  
A-2482 Münchendorf  
Tel.: +43 / 2259 30133  
Fax: +43 / 2259 30149  
stoltronic@aon.at

Addresses: August 2010





Copyright by TR-Electronic. All rights reserved. 68-105-094, August 2010.

**TR-Electronic GmbH**  
Eglishalde 6  
D-78647 Trossingen

Tel. +49 (0)7425 / 228-0  
Fax +49 (0)7425 / 228-33  
info@tr-electronic.de

[www.tr-electronic.de](http://www.tr-electronic.de)